

- Without ready-made fabric
- Uniform, linear clamping of the fabric
- Light system solution
- Simple assembly without special tools
- High clamping strength

EPS 6-007
KTA+

The KTA+ profile can be used to make frames to be attached to walls or existing structures. The installation is made using offset screws or adhesive.



Dimensions: 27 x 9 mm



The profiles are fixed with offset placed screws or by bonding.



Clamping bar
front



Clamping bar
above



Front profile mounted on
square pipe, screws are offset



Upper profile mounted on
square pipe, screws are offset

The assembly instructions with a video link for the attachment of the clamping bars can be found on pages 15 - 17.

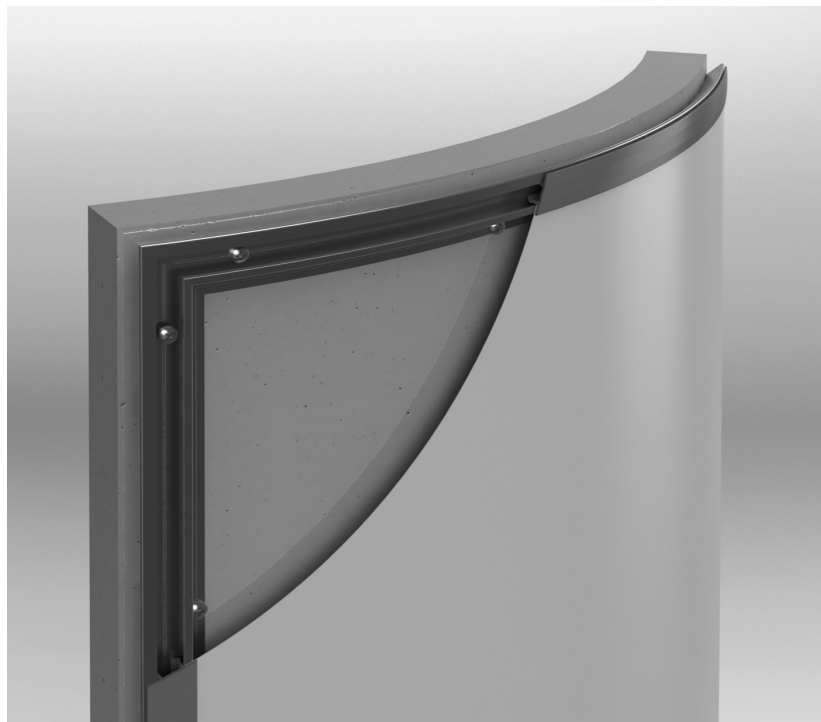
The KTA+ profile can be mounted to both straight line and curved surfaces.



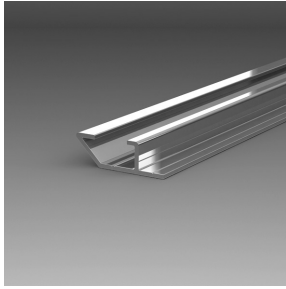
Dimensions: 27 x 9 mm



Profile on rigid surface.



Profile on curved surface For this purpose, the profile is bent manually by hand during assembly.



Profile KTA+
EPS 6-007



Clamping bar CS
EPS 6-125

EPS

SYSTEMS

EPS Systems KG
Hauptstr. 42
57555 Mundersbach/Germany
Fon +49 (0) 271.338829-00
info@eps-systems.de
www.eps-systems.de