

The system for large-scale advertising structures

EPS.LUMI MAXX



© Techquadrat Werbetechnik GmbH



Motiv 1 und 2 © Johannes Ginsberg



Benefits

- Great freedom of design thanks to the individual formats
- Additional accentuation is possible thanks to frontal and contour lighting
- Corporate Communications thanks to large-scale digital printing
- Screening and solar shading with unrestricted view from the inside out when using Mesh fabric
- Clean corner solutions possible
- System-uniform building depth of 65 mm

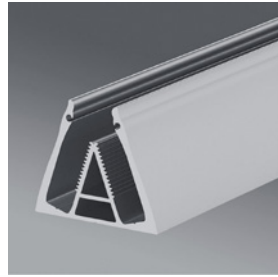
Classic applications

- Large-scale banner and illuminated sign cases
- Facade advertising
- Building lining

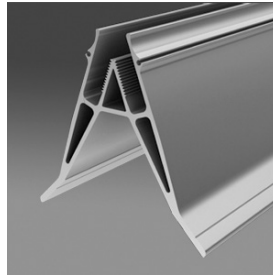
Profile variety with system



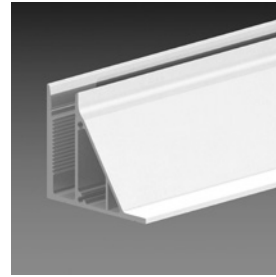
Retrofit



Joint profile

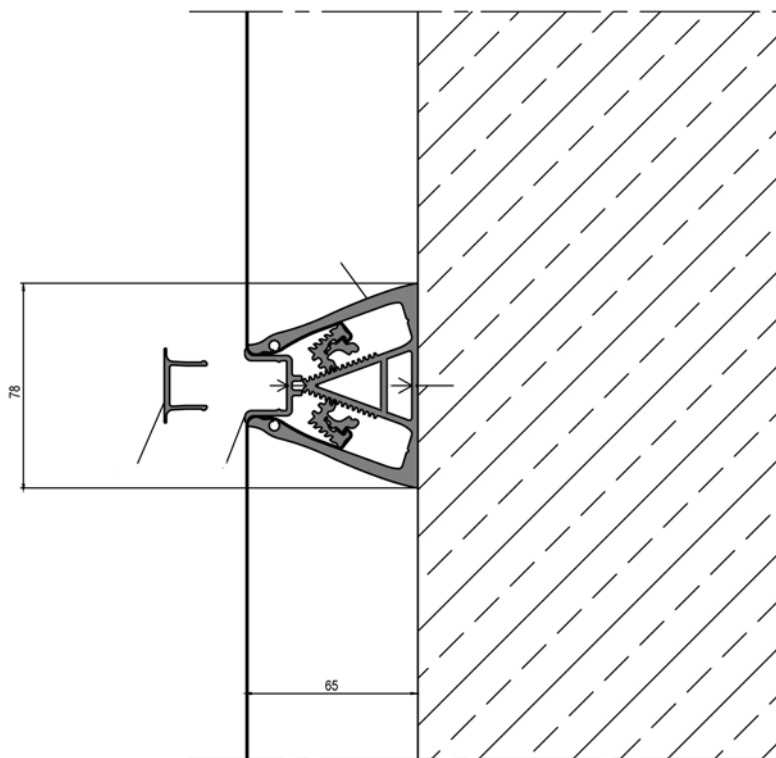


Corner profile



Closure profile

Vertical section detail wall fixing



Attachment on mineral underground

Well-proven technology

- Perfect tension due to flexholder technology
- Simple frame construction with few components
- Easy opening and re-clamping of the fabric area
- Maintenance and conversion costs are reduced significantly