

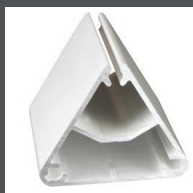
EPS.TRIO

Produktliste Verarbeiter
Product list producer

12-24

Profile / Profiles

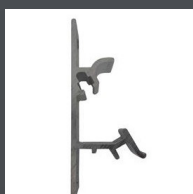
Beschreibung Description	Art.-Nr. Art.-No.	Einheit Unit
-----------------------------	----------------------	-----------------



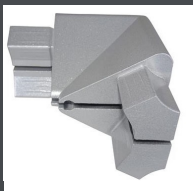
Rahmenprofil Profilbreite: 68 mm, eloxiert, mit einer Nut Stange: 6,15 m lang Frame profile Profile width: 68 mm, anodized, with one groove, Length: 6,15 m	EPS 3-001	Stange Bar
--	-----------	-------------------

Elemente / Elements

Beschreibung Description	Art.-Nr. Art.-No.	Einheit Unit
-----------------------------	----------------------	-----------------



Wandhalterung mit Schraube Alu roh, M6x50mm Länge: 50 mm Wall bracket with screw natural, M6x50mm Length: 50 mm	EPS 3-011	Stück piece
--	-----------	--------------------



Eckstück RAL 9006 Corner piece RAL 9006	EPS 3-020	Stück piece
--	-----------	--------------------



Stoßverbinder Joint connector	EPS 3-021	Stück piece
----------------------------------	-----------	----------------

Elemente / Elements

	Beschreibung Description	Art.-Nr. Art.-No.	Einheit Unit
	Stormfix Expanderseil Länge: 240 mm Stormfix expander robe Length: 240 mm	EPS 3-030	Stück piece
	Stormfix Eckexpanderseil Stormfix Corner expander robe	EPS 3-031	Stück piece

Dienstleistungen/ Services

	Beschreibung Description	Art.-Nr. Art.-No.	Einheit Unit
	Profilschnitt 90° oder 45° < 100 mm Profilbreite Profile cut 90° or 45° < 100 mm profile width	EPS 3-200	Stück Piece
	Profilbohrung Wasserablauf Drilling for water drain	EPS 3-210	Stück Piece

EPS SYSTEMS

EPS Systems KG
Obere Leimbach 6
57074 Siegen/Germany
Fon +49 (0) 271.338829-00
info@eps-systems.de
www.eps-systems.de