

Mounting profile M35

Technical Documentation

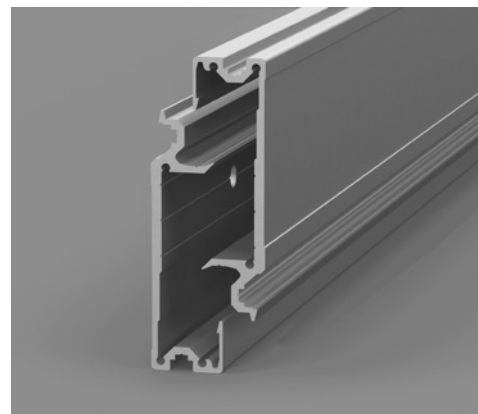
07.2023

Mounting profile M35 for light boxes:

Notes on the M35 mounting profile:

With the M35 mounting profile, you speed up the assembly process of tensioned fabric systems immensely.

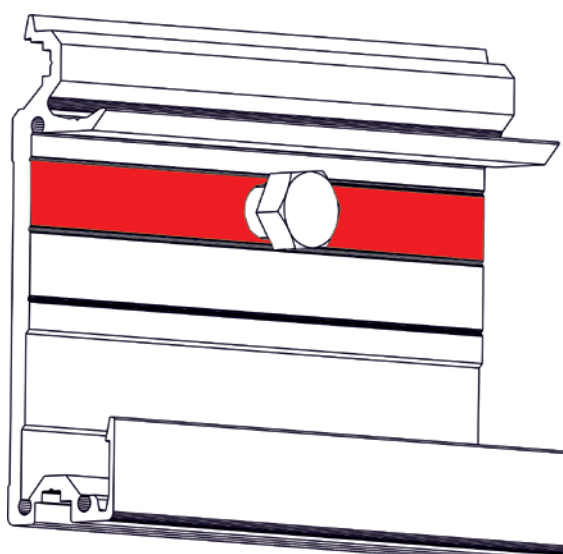
Tensioned fabric systems can be finished in the factory. Subsequent installation of the banner material is therefore no longer necessary. This not only saves time and money at the installation site, but also generally allows tensioning fabric systems to be installed regardless of outside temperatures.



The geometry of the profile not only allows the advertising system to be latched to the wall in a wind-proof manner, but also ensures a very high load-bearing capacity at the same time. We will be happy to provide our tensile test for the purpose of project statics upon request. Due to the low wall thickness of 35 mm, a drainage behind the advertising system is guaranteed. Subsequent height adjustment of the advertising system by up to 10 mm is possible.

We will be happy to advise you on the planning and use of the profile.

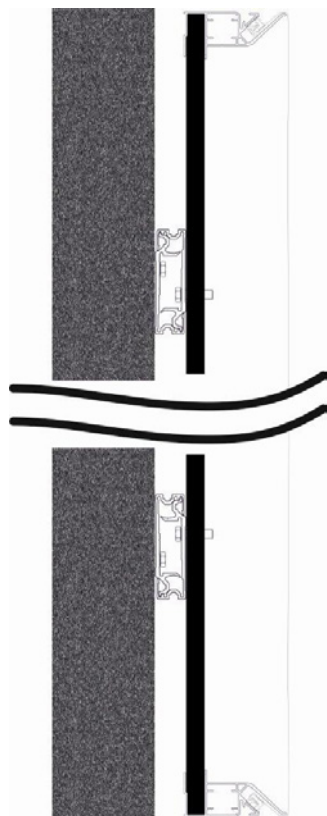
Recommended screw range



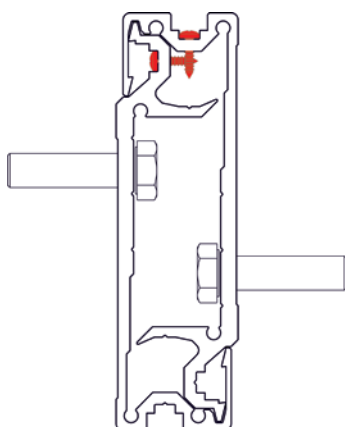
Stay within the screw field marked in red. Any number of fastening points can be set here.

Max. screw head size: 18 mm

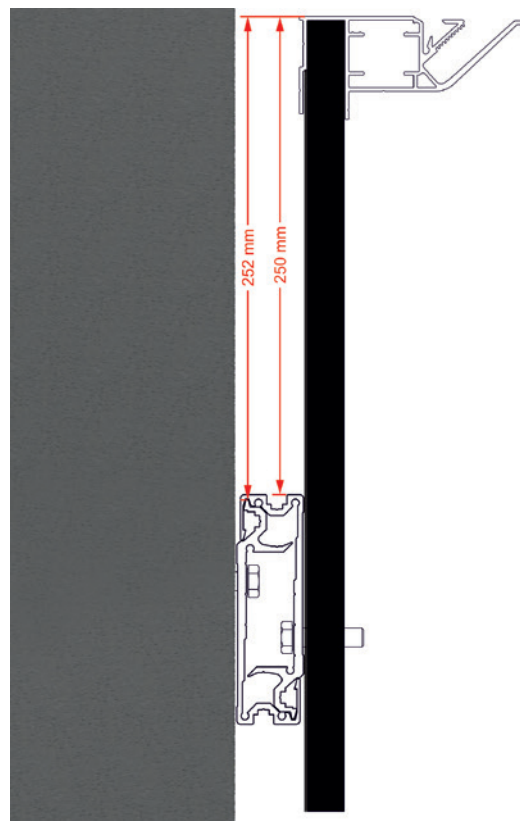
Assembly recommendation



- Stable 2-point mounting on the mounting surface
- Always mount rail sections in 2 rows (depending on frame height)



Secure against possible lateral displacement with 4.8 x 19 mm self-tapping screws.

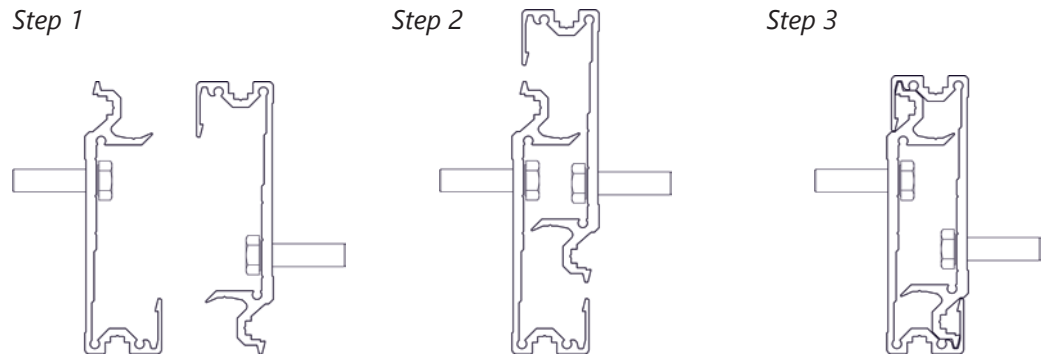


Attach mounting profile to the wall approx. 2 mm deeper than mounting profile on the frame.

Mounting example:

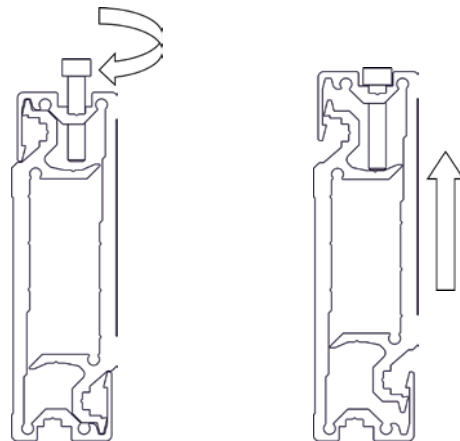
- Upper mounting profile mounted approx. 250 mm indented from the profile edge on the rear side of the frame (see measuring point).
- Counterpart on the wall turned by 180° and mounted approx. 2 mm deeper
- Upper wall mounting profile mounted at approx. 252 mm (see measuring point)
- Lower mounting profile mounted from profile edge approx. 250 mm indented on rear side of frame
- Counterpart on the wall turned by 180° and mounted approx. 2 mm lower
- Lower wall mounting profile mounted at approx. 248 mm

Illustration of screw position and mounting process



Windproof latching:

The frame must be pressed against the wall to be unhooked and at the same time pulled up at the same time.

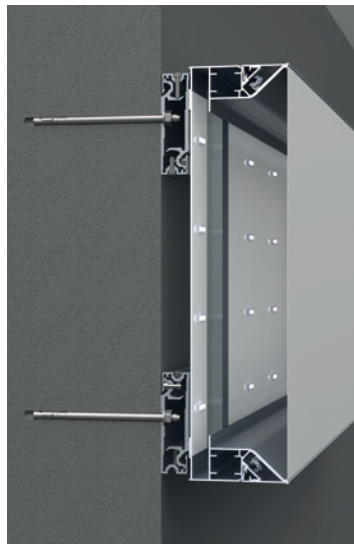


Subsequent height adjustability:

As required, an M6 thread can be cut into the mounting profile, which is mounted to the frame.

By means of an M6 x 30 screw, the frame (section) can be readjusted in height by up to 10 mm after it has been hooked onto the wall.

Rail as assembly aid for multi-part advertising systems:



If advertising systems are supplied in several parts, then the mounting profile can significantly simplify the connection of the individual system sections.

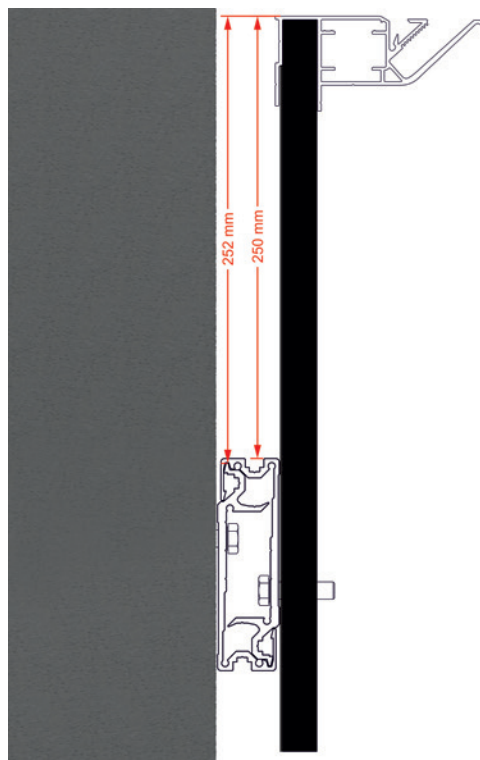
Simply bring both parts of the advertising system together on the wall-side mounting profile using connectors and screw them together at the joint.

EPS

SYSTEMS

EPS Systems KG
Obere Leimbach 6
57074 Siegen/Germany
Fon +49 (0) 271.338829-00
info@eps-systems.de
www.eps-systems.de

Montageempfehlung



Montageschienen an der Wand ca. 2 mm tiefer anbringen als Montageschienen am Rahmen

Montagebeispiel:

- Obere Montageschiene vom Profilrand ca. 250 mm eingerückt an Rahmenrückseite montiert (siehe Meßpunkt)
- Schiene an der Wand um 180° gedreht und ca. 2 mm tiefer montiert
- Obere Wandmontageschiene bei ca. 252 mm montiert (siehe Meßpunkt)
- Untere Montageschiene vom Profilrand ca. 250 mm eingerückt an Rahmenrückseite montiert.
- Schiene an der Wand um 180° gedreht und ca. 2 mm tiefer montiert.
- Untere Wandmontageschiene bei ca. 248 mm montiert.

Mit Bohrschrauben 4,8 x 19 mm gegen eine mögliche seitliche Verschiebung sichern.

