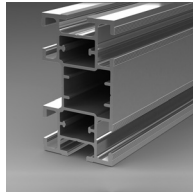


## EPS.REDY

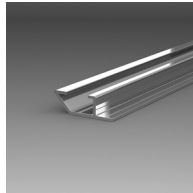
Technical Documentation

02-2026



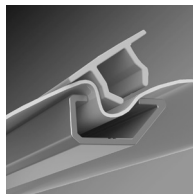
Profile KT+  
Self-supporting hollow profile  
for large spaces and structures,  
with six grooves

Page 3-10



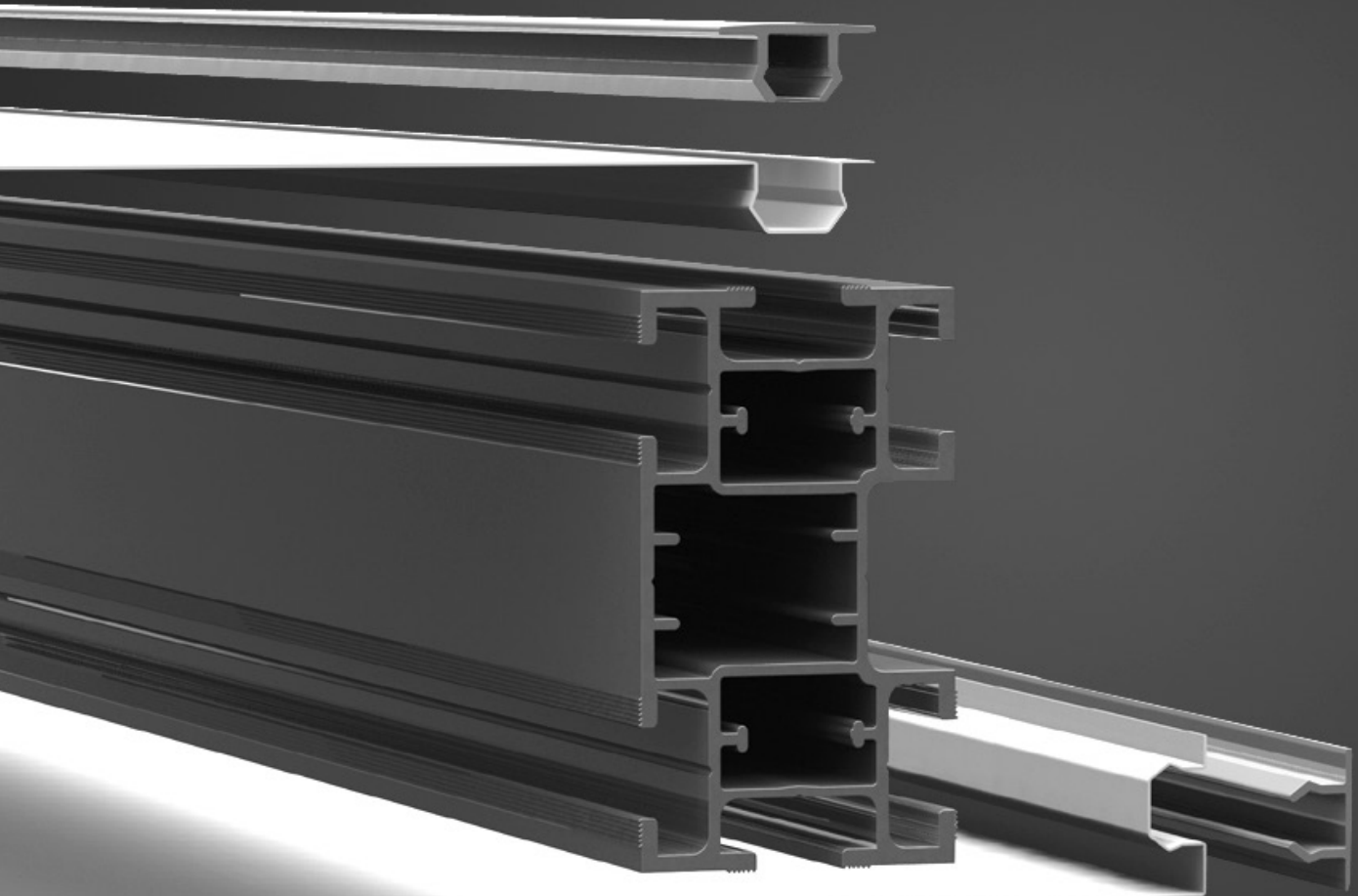
Profile KTA+  
Profile for attaching to walls or  
existing structures, mounting with  
offset screw fastening or adhesion

Page 11-14



Fabric tensioning

Page 15-17



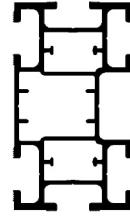
- Without ready-made fabric
- Uniform, linear clamping of the fabric
- Light system solution
- Simple assembly without special tools
- High clamping strength

**EPS 6-045**  
**KT+**

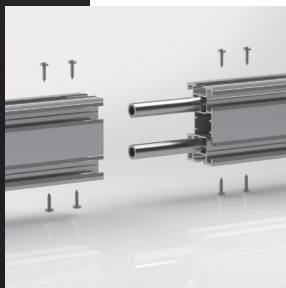
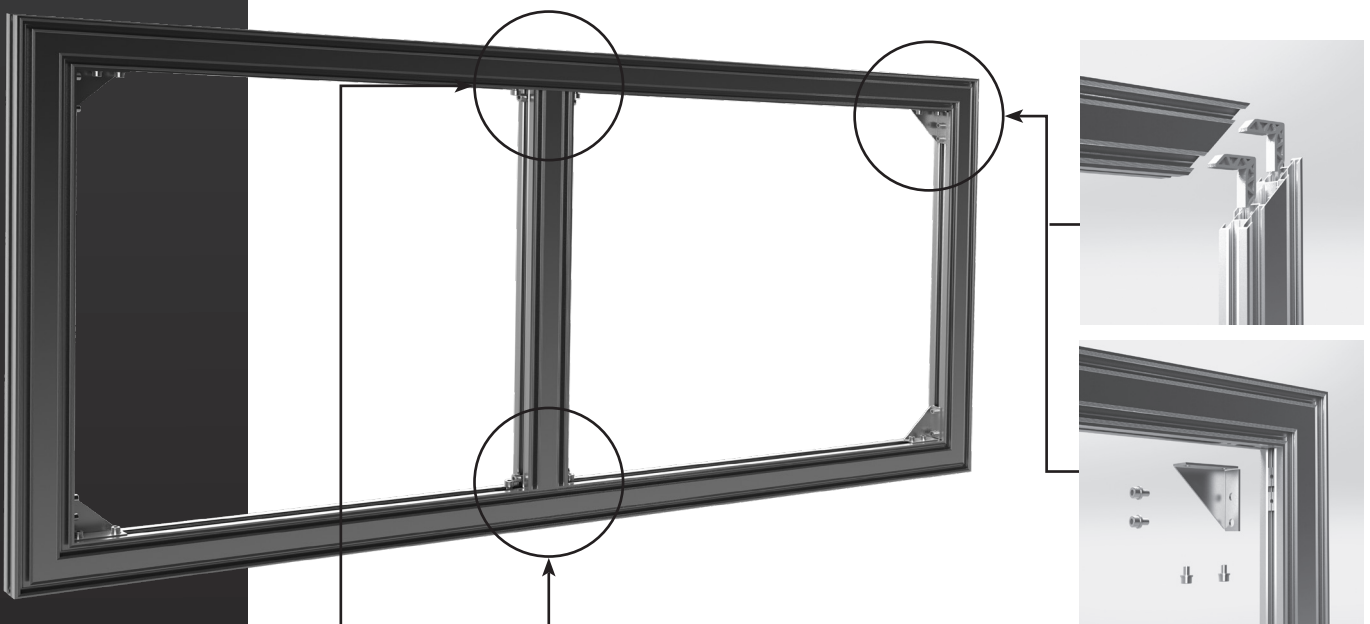
The self-supporting KT+ hollow profile is suitable for large scale frames. Through the six grooves, the structures created can be stretched on one or more-sided.

### CUTTING

Dur EPS.PROFIL PLUS cutting service saws your profiles upon request.



Profile mounted vertically  
Dimensions: 37 x 64 mm



### CORNERS

For the corner connection, two EQ ABS (6-214) corner joints are inserted in the profiles. Then an EQ KT+ MUR (6-220) corner reinforcement is inserted into the corner.

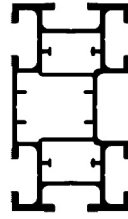
### FRAME SUPPORTS

With self-supporting frameworks, Frame supports are built in for reinforcement. The end of a Frame support is screwed on the frame with two EQ KT+ (6-228) corner reinforcements.

### BUTT JOINTS

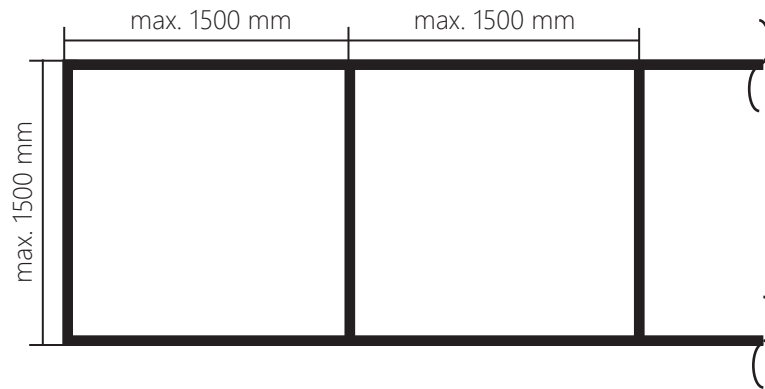
For the buttjoint, two TU connecting pipes (6-156) are inserted into the profiles and fastened with 3.5 x 13 mm self-tapping screws.

In order to ensure the stability of the frame, frame supports are installed.

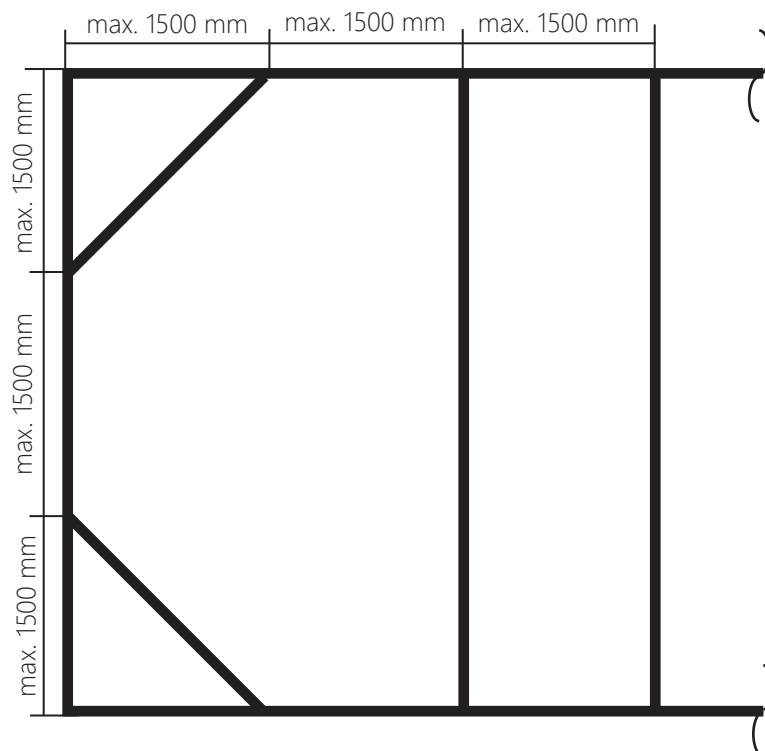


Profile mounted vertically  
Dimensions: 37 x 64 mm

Distance of frame support without additional diagonal frame support

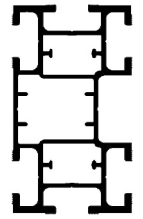


Distance of frame support with diagonal frame support

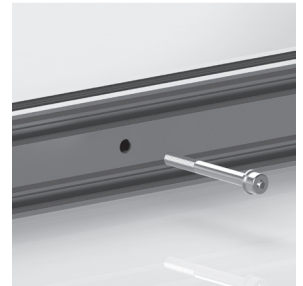


With the KT+ profile, frames can be directly screwed onto the wall without reinforcement.

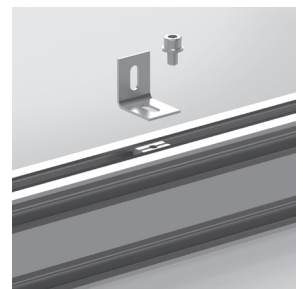
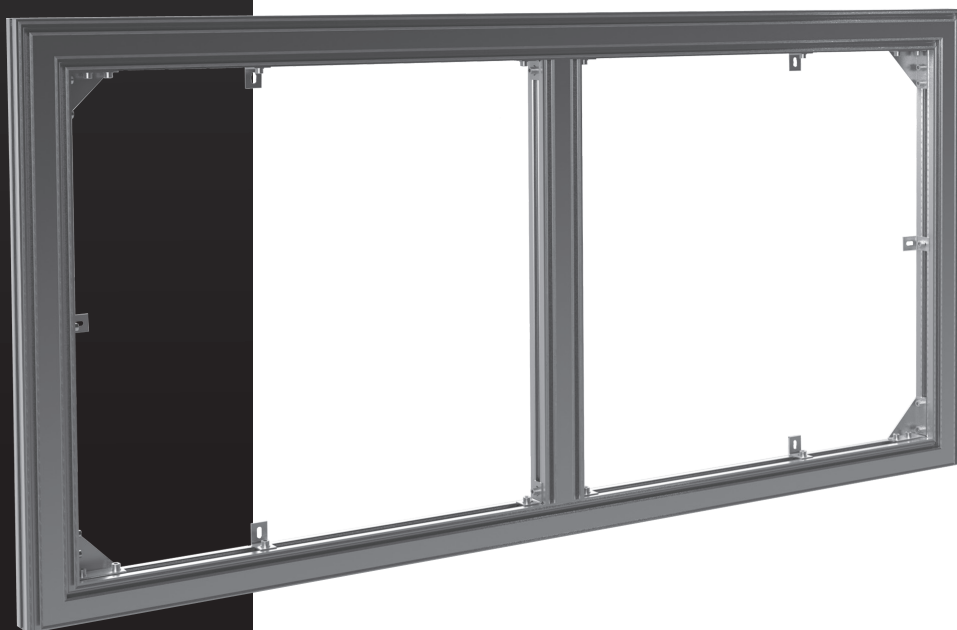
1. This variant is the simplest solution. The fastening is done directly through the profile force-fit onto the wall surface. Place the profile on the wall so that the screw head sits on the hollowed out profile side and does not interfere while stretching the fabric. In this installation, no additional Frame supports are needed.



Profile mounted vertically  
Dimensions:  
37 x 64 mm

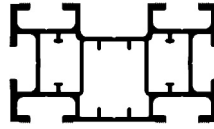


2. Mounting with EQ KT+ (6-228) corner reinforcements on the wall surface

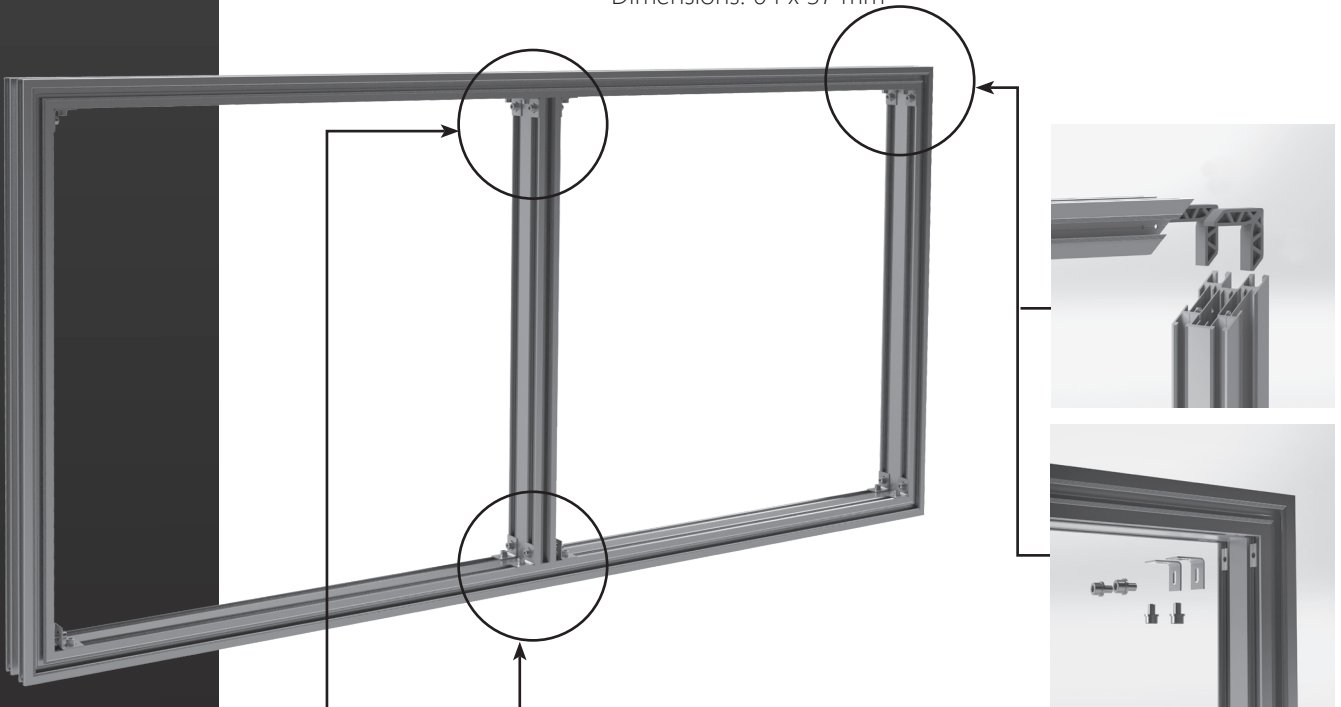


The choice of the screws and anchor bolts is dependent on the type of background. The positioner holds the responsibility for this.

When the KT+ profile is mounted horizontally, the frame can be constructed double-sided.



Profile mounted horizontally  
Dimensions: 64 x 37 mm

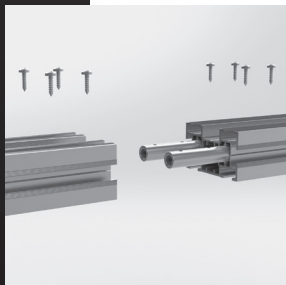


### CORNERS

For the corner connection, two EQ ABS (6-214) corner joints are inserted in the profiles. Then two EQ KT+ (6-228) corner reinforcements are additionally inserted into the corners.

### FRAME SUPPORTS

With self-supporting frameworks, frame supports are built in for reinforcement. The end of a frame support is screwed on the frame with four EQ KT+ (6-228) corner reinforcements.



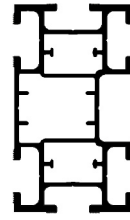
### BUTT JOINTS

For the butt joint, two TU connecting pipes (6-156) are inserted into the profiles and fastened with 3.5 x 13 mm self-tapping screws.

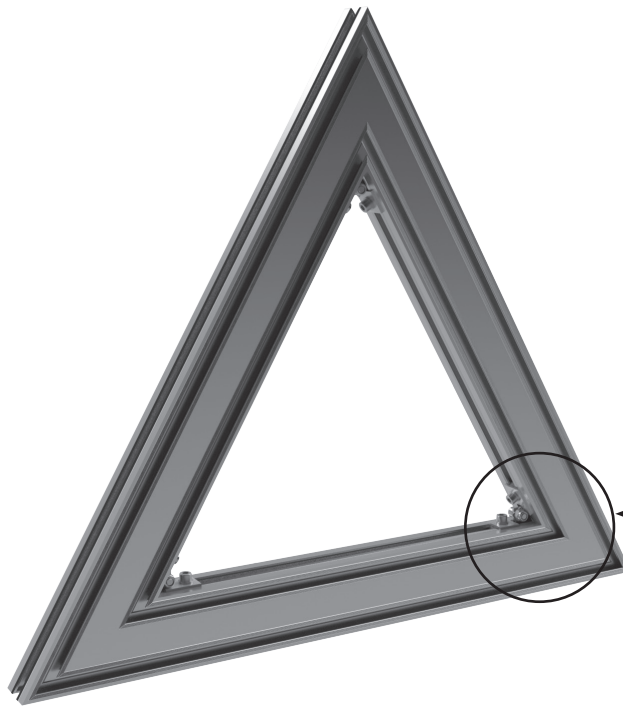


*An example of a free-standing two-sided wall surface with individual do-it-yourself feet.*

With the KT+ profile, bowed frames and special forms can be made. Dur EPS.PROFIL PLUS service saws and bends out profiles upon request with the most modern CNC technology.



Profile mounted vertically  
Dimensions: 37 x 64 mm



### CORNERS

With the adjustable EQ ART KT+ (6-226) corner reinforcement, corners can be connected from 50° to 180°.



### CYRCLE

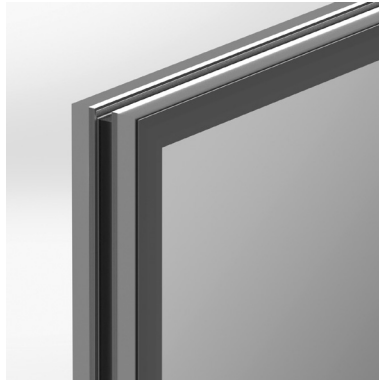
In horizontal position, the profile KT+ can be CNC bent.

In the standing position a deformation isn't possible.

## Clamping bars

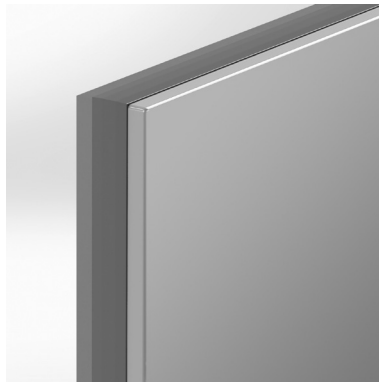
The KT+ profile offers differing possibilities for mounting the clamping bars and for a one or more-sided fabric clamping.

## Profile mounted vertically



## CLAMPING BARS FRONT

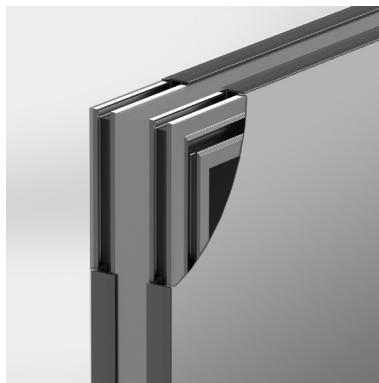
The attachment from the front is the classic method. A „framed“ optical effect is created. For this, the clamping bars are cut at a 45° angle.



## CLAMPING BARS LATERAL

With this type of attachment, a frameless look is created because the clamping bar can hardly be seen from the front. The clamping bars are cut to mitre

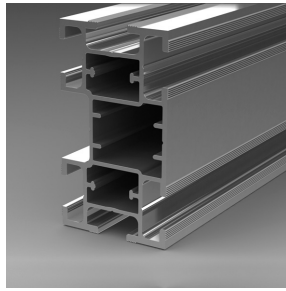
## Profile mounted horizontally



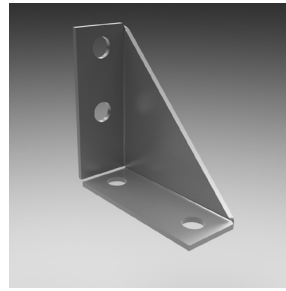
## TWO-SIDED

With KT+ profile, fabric can be clamped on two sides. In addition to the frontal clamping bar assembly, the lateral attachment offers the advantage that an almost complete covering of the profile is possible.

The assembly instructions with a video link for the attachment of the clamping bars can be found on pages 15 - 17.



Profile KT+  
EPS 6-045

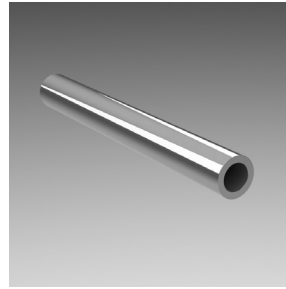


EQ KT+ MUR  
Corner reinforcement  
+ Wall mounting  
EPS 6-220

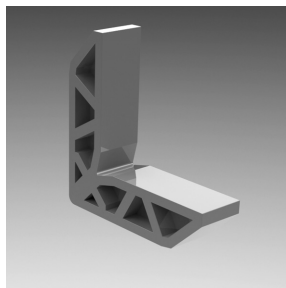
(as a set including T-nuts: EPS 6-276)



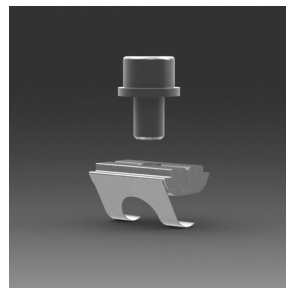
Clamping bar CS  
EPS 6-125



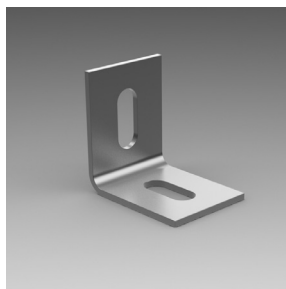
TU joiner tube  
EPS 6-156



EQ ABS  
Corner angle  
EPS 6-214



CLM M6  
T-Nut with screw  
and washer  
EPS 6-270



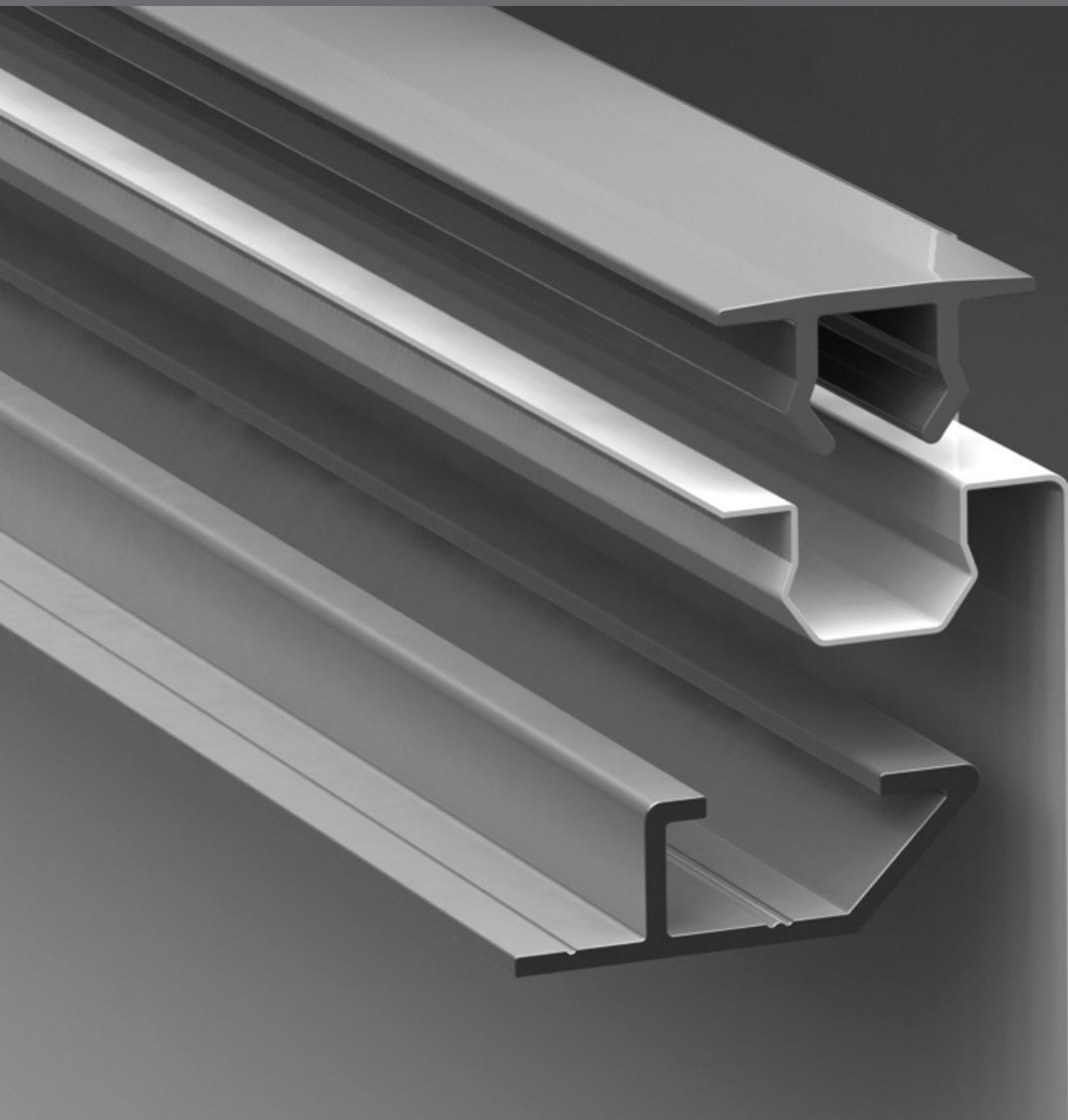
EQ KT+  
Corner reinforcement  
90°  
EPS 6-228

(as a set including T-nuts: EPS 6-274)



EQ KT+  
adjustable corne rein-  
forcement  
EPS 6-226

(as a set including T-nuts: EPS 6-278)



- Without ready-made fabric
- Uniform, linear clamping of the fabric
- Light system solution
- Simple assembly without special tools
- High clamping strength

**EPS 6-007**  
**KTA+**

The KTA+ profile can be used to make frames to be attached to walls or existing structures. The installation is made using offset screws or adhesive.



Dimensions: 27 x 9 mm



The profiles are fixed with offset placed screws or by bonding.



Clamping bar front



Clamping bar above



Front profile mounted on square pipe, screws are offset



Upper profile mounted on square pipe, screws are offset

The assembly instructions with a video link for the attachment of the clamping bars can be found on pages 15 - 17.

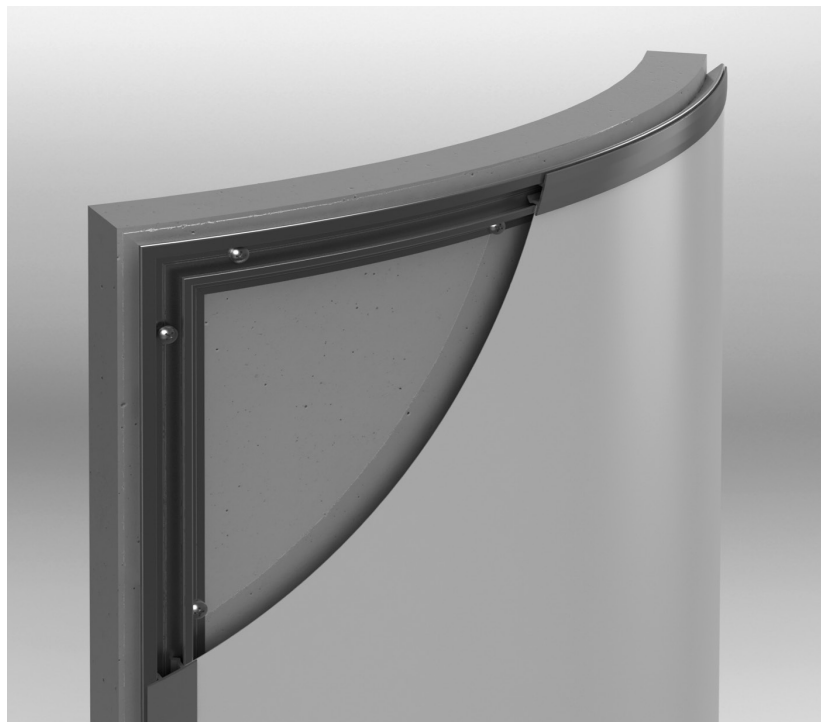
The KTA+ profile can be mounted to both straight line and curved surfaces.



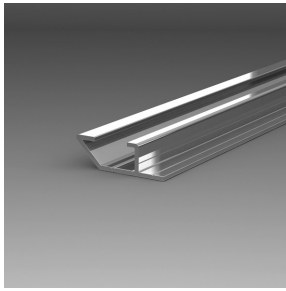
Dimensions: 27 x 9 mm



Profile on rigid surface.



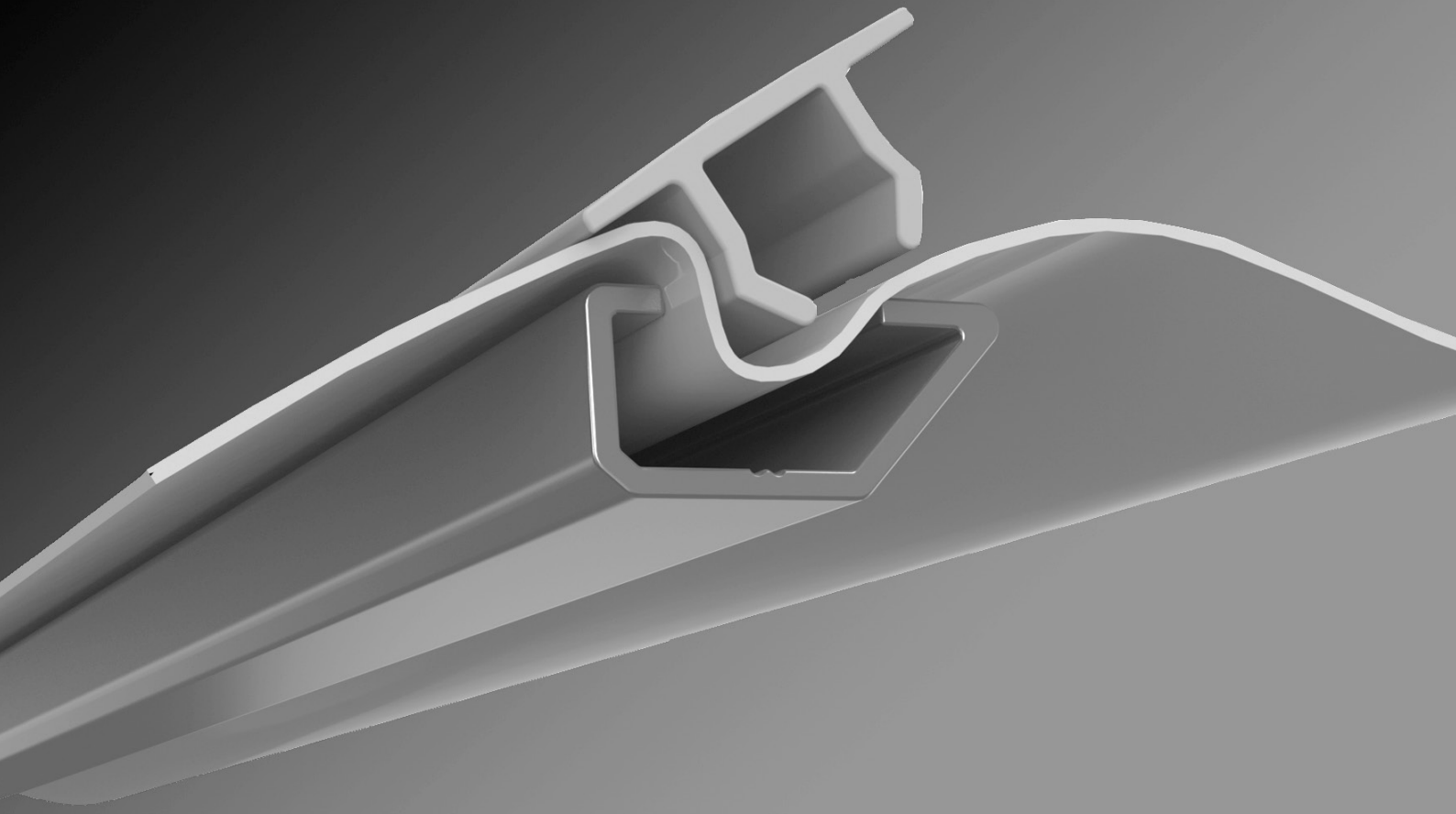
Profile on curved surface For this purpose, the profile is bent manually by hand during assembly.



Profile KTA+  
EPS 6-007



Clamping bar CS  
EPS 6-125



**Fabric tensioning**

### TENSIONING THE FABRIC

The mounting and clamping of the fabric represents the final step in the system. Please follow the mounting instructions exactly on the following page and only use the tools recommended.

Caution: In order to tense the fabric, please always use a non-rebound rubber hammer.

### CHOICE OF THE CLAMPING BAR

The clamping bar CS is for the use in interior rooms, but also for the outdoor area. The standard colour is white (other colours are available).



### Grammage and temperatures for clamping

The grammage of the fabric to be used should be between 250 and 450 gr/m<sup>2</sup>

The temperature at the mounting should not be colder than 8° C.

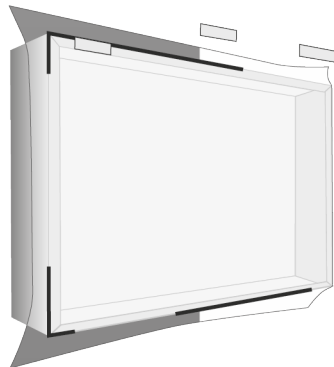
### ASSEMBLING VIDEO

To assembly the fabric, we also recommend you to view our assembling video:  
[www.eps-systems.de/en/profile-systemes/epsredy](http://www.eps-systems.de/en/profile-systemes/epsredy)



### ASSEMBLING VIDEO

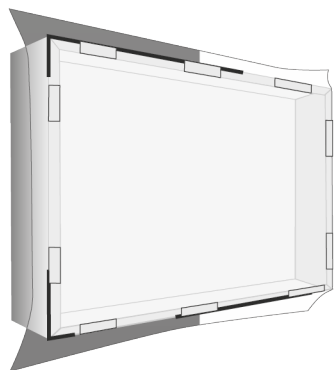
To assembly the fabric, we also recommend you to view our assembling video:  
[www.eps-systems.de/en/profile-systemes/epsredy](http://www.eps-systems.de/en/profile-systemes/epsredy)



### CUTTING AND ALIGNMENT OF FABRIC

The fabric must be 10 cm larger than the frame on all sides.

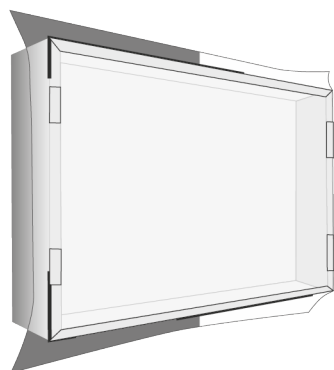
Place the clamping profile pieces for the positioning and pre-stretching first above, than below and finally on the sides. Carefully pull on the fabric while doing so.



### CLAMPING PROFILE SECTIONS

The profile sections are oddments with a length of approx. 6 to 10 cm.

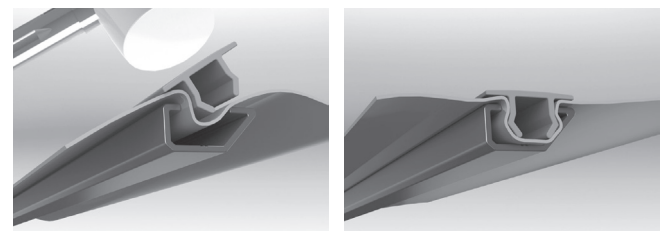
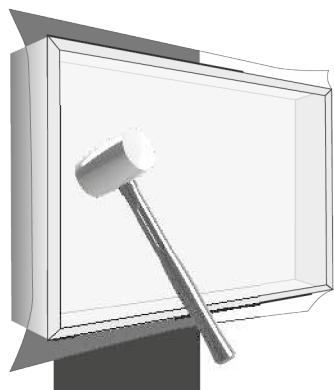
Clamping bar sections for pre-stretching:  
 Item EPS 6-302, PU = 25 pieces



### ATTACHING THE CLAMPING BAR AND STRETCHING THE FABRIC

With the clamping bar attach and stretch the fabric. Observe the placement of the profile sections and remove these one by one.

Clamp the fabric by moving the bars first from the outside edge to the inner edge. Strike the clamping bar with the aid of the non-rebound rubber hammer into the profile groove and the fabric is stretched.



Slightly screw in clamping bar while stretching and strike it with the rubber hammer.

### CUTTING OF THE FABRIC

When the fabric is stretched, it is cut along the clamping bar or in one of the profile grooves (for the two-sided stretched housing) depending on the type of fabric mounting.

# EPS

## SYSTEMS

EPS Systems KG  
Hauptstr. 42  
57555 Mundersbach/Germany  
Fon +49 (0) 271.338829-00  
[info@eps-systems.de](mailto:info@eps-systems.de)  
[www.eps-systems.de](http://www.eps-systems.de)