



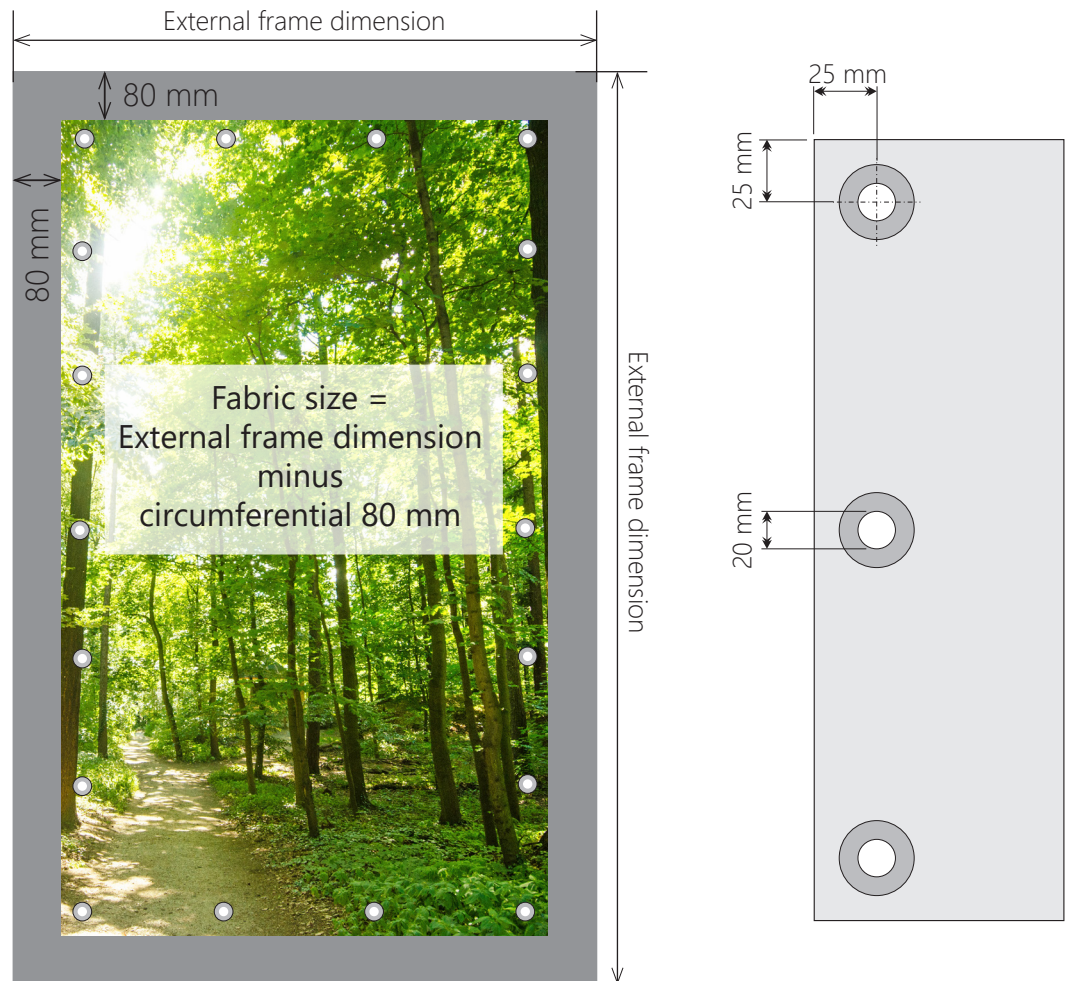
EPS.TRIO

Technical Documentation

05-2026

When using the expander loops Stormfix:

- **Subtract 80 mm** from the outer dimension of the frame all around.
- Place stainless round eyelets every 200 - 500 mm depending on the banner format
- Recommended round eyelet diameter: 12-20 mm
- Recommended edge distance: 20 mm



Mounting frame with corner piece

Fix corner piece with screw in the screw hole provided.

Note:

When cutting the profiles to size, subtract 130 mm from the total frame size.

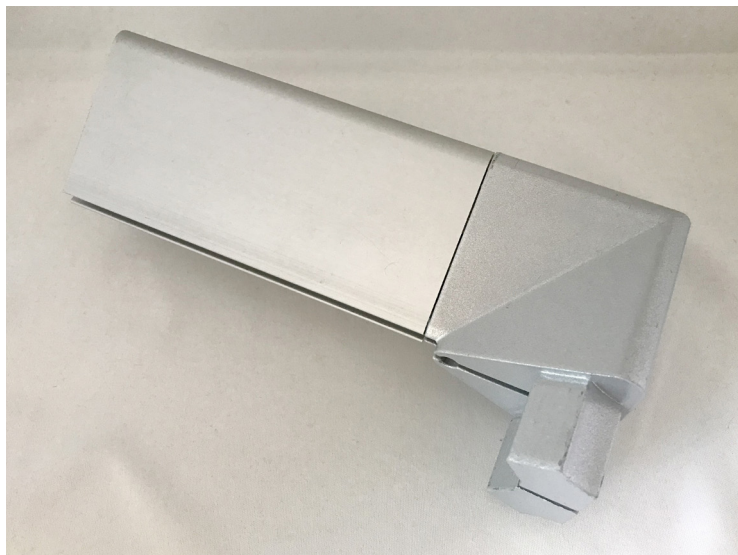
Example:

Frame size 1.000 x 1.000 mm

Cutting size Profile 3-001 870 x 870 mm



Insert corner into the profile



Frame assembly

Please note:

- Banner assembly on page 2
- Max. Distance to the wall brackets: 2.500 mm*

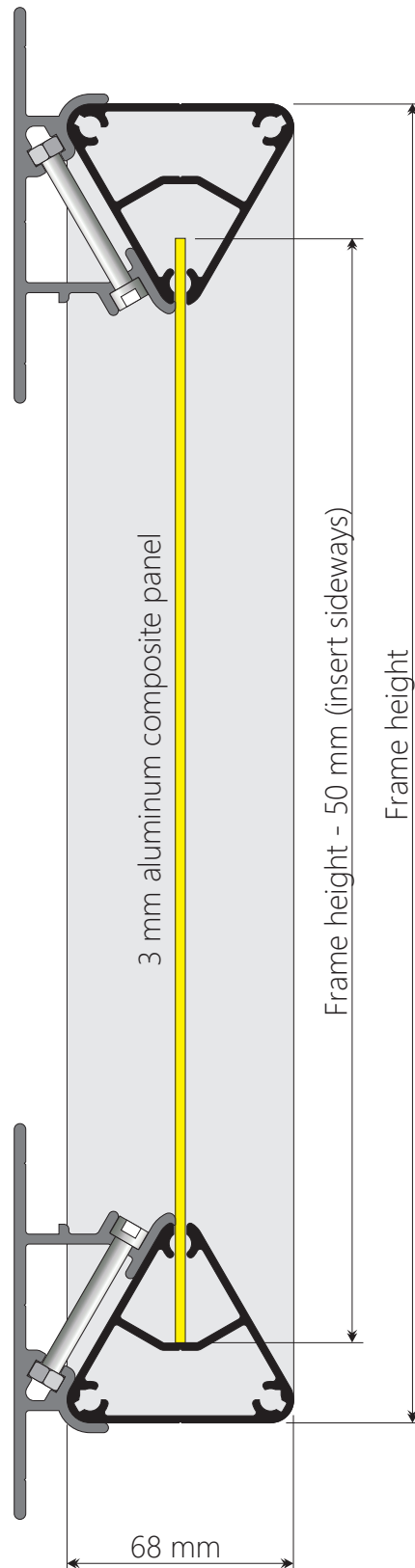
Wall bracket with screw EPS 3-011



**We cannot assume any liability for the secure fastening of the wall brackets on the various substrates.
The distance between the wall brackets depends on the wind loads at the installation site and must be checked at your own responsibility!*

Mounting aluminum composite panel

- Max. Panel thickness 3 mm
- Mounting only possible with wall bracket EPS 3-011
- Aluminum composite panel is inserted into the side of the profile



EPS

SYSTEMS

EPS GmbH
Hauptstr. 42
57555 Mudersbach/Germany
Fon +49 (0) 271.338829-00
info@eps-systems.de
www.eps-systems.de